



About Us



Our Services

MONTHLY HIGHLIGHTS JANUARY 2022



As we enter into a new year, the Kith Elder Care team would like to take this opportunity to express our gratitude to everyone - to our associates within the healthcare system, the elder law specialists, and the various community resource groups that have supported us over the years.

We would also like to give a special thanks to our clients and their loved ones for their continued trust and confidence in our services.

Best wishes to all for a healthy new year!

The Kith Elder Care Team

CERVICAL CANCER AWARENESS MONTH



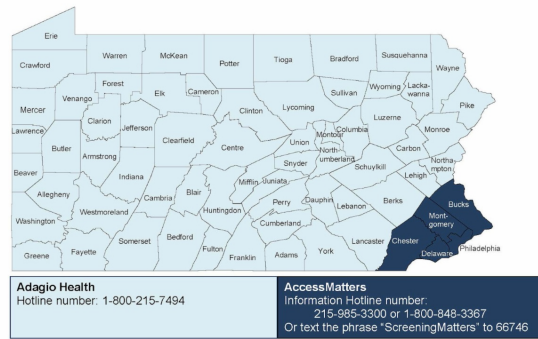
Pennsylvania Breast & Cervical Cancer Early Detection Program (PA-BCCEDP)

The Pennsylvania Breast & Cervical Cancer Early Detection Program (PA-BCCEDP) is a free breast and cervical cancer early detection program of the Pennsylvania Department of Health. It is funded by the Department of Health and through a grant the Department receives from the Centers for Disease Control and Prevention.

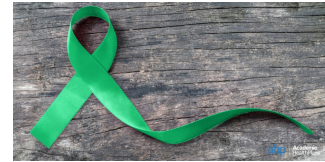
Free services for those meeting the eligibility standards include:

- Mammograms;
- Pap and HPV tests; and
- Follow-up diagnostic tests for abnormal screening results.

Call the PA-BCCEDP Hotline for your area



GLAUCOMA AWARENESS MONTH



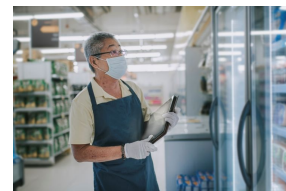
Prevent Blindness Organization Provides Educational Resources, Materials and Support to Patients and Caregivers for January's National Glaucoma Awareness Month

Prevent Blindness is joining January's National Glaucoma Awareness Month by offering a variety of free educational and awareness-building resources to help prevent unnecessary vision loss from one of the world's leading causes of blindness.

[Learn more about glaucoma detection...](#)

Philadelphia Corporation for Aging (PCA) **Combating ageism: The value of older workers**

Older adults provide a vital service in today's workforce. In fact, the percentage of working Americans who are 55 or older has climbed over the last decade, with a dip due to COVID-19. In 2020, a robust 48% of older Americans were employed, according to the U.S. Bureau of Labor Statistics. More so, projections indicate that employment for adults 55-plus will more than double in the 30-year span of 1994-2024, a disproportionate boost compared to the increase in demographic population. Among people 75 and older, the labor force is expected to grow by 96.5% over the next decade.



[More details and resources...](#)

Kith Elder Care serves Philadelphia, Montgomery, Delaware, Chester, and Bucks Counties

Contact **Kith Elder Care** for a **FREE** consultation at 215.880.3541

AGING **(i)fe CARE**
ASSOCIATION
MEMBER